

#	Part description	
1	Color Lens Cover	
2	Lamp Cover	
3	Lens Glass	
4	O-ring	
5	20 Watt Bulb	} Item # 12805 Replacement Lamp with "O" Ring
6	Oval Nut	
7	Lamp Housing	
8	"U" Bracket	
9	Single Light Transformer - Item #12385	
10	Triple Light Transformer - Item #12390	
11	Connector Cable	} Included with Triple Light Unit only
12	3 Way Splitter	
13	Base Cover	
14	Weight Base	

Also available: Complete replacement light fixture Item# 12395. Includes parts 1-8, 13 & 14.

PONDMASTER®

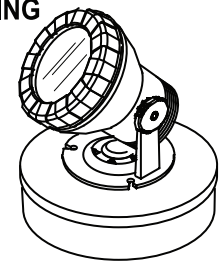
SAVE THESE INSTRUCTIONS

SUBMERSIBLE HALOGEN POND LIGHT

CARE AND OPERATING INSTRUCTIONS

Single Light
MODEL 02391

Triple Light
MODEL 02393



The Pondmaster Submersible Halogen Pond Light can be used underwater to accent plants, waterfalls, fountains and fish. Outside the pond use it to highlight flowing water, rock work, plants or statuary. The four colored disks provide tints to further enhance the beauty of your pond.

WARNING! PONDERS ARE DANGEROUS TO SMALL CHILDREN!
NEVER LEAVE CHILDREN UNSUPERVISED NEAR A POND.

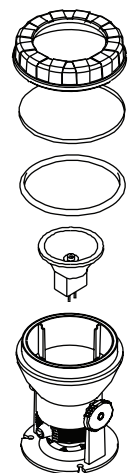
Bulb Replacement

The lamp must be replaced only with a 12 volt 20 watt halogen bulb. A larger wattage bulb will burn out the transformer. Care must be taken to check when purchasing a replacement bulb. To insure proper operation look for Pondmaster Replacement Halogen Lamps - Item # 12805 Replacement Lamp with "O" Ring.

Caution: Higher wattage bulbs are manufactured to the same physical size as the 20 watt lamp originally installed in the unit.

To install the new bulb:

- Unplug the transformer, and dry off the light.
- Remove colored plastic lens if installed.
- Unscrew lamp cover removing the glass lens and cover.
- Remove bulb by pulling straight up, out of housing.
- Align pins of replacement bulb with holes of lamp socket in housing and press lamp down into housing and socket.
- Clean the glass lens if required, and re-seat over "O" ring water seal.
- Place cover over glass, tighten securely by turning clockwise.
- Re-install colored plastic lens if used.
- Plug in transformer, test light by turning on power.
- Relocate light to desired location.



Limited Warranty

E.G. Danner Mfg.Inc. will repair or replace any submersible pond light found to be defective within one year of purchase. For warranty repair the light must be returned to our factory. Please include dated proof of purchase and \$10.00 (U.S. Funds) for shipping and handling.

Damages or injuries resulting from negligence or misuse of this product are excluded from this warranty. This warranty gives you specific legal rights and you may also have other rights which vary from state to state.

Directions:

BEFORE YOU BEGIN: Read and Understand these Important Safety Instructions

Caution: To guard against injury, basic safety precautions should be observed, including the following:

Always unplug to disconnect power before servicing light.

Danger: Risk of Electrical Shock; This light has not been investigated for use in, and is not to be used in swimming pools.

Warning: Electrical Precaution; To reduce the risk of electrical shock, connect only to a properly grounded, grounding type receptacle. The National Electric Code (NEC), Article 680-41(A) requires ground fault circuit interrupter (GFCI) be installed in the branch circuit supplying fountain equipment. Only a 3-wire grounding extension cord and grounded outlets should be used. If the extension cord plug can reach the water and be accidentally submerged it should be secured to prevent submersion.

Warning: Fire Hazard; The lamp can reach very high temperatures. To avoid the risk of fire, do not allow curtains or other combustible materials to come in contact with the lamp. For the same reason this light should not be used indoors out of the water.

ZG093 06.07

